

Commercial Lighting Systems Ltd

Mini Buried/Recessed IP67 L.E.D. Luminaire

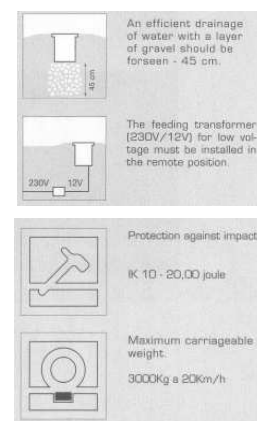
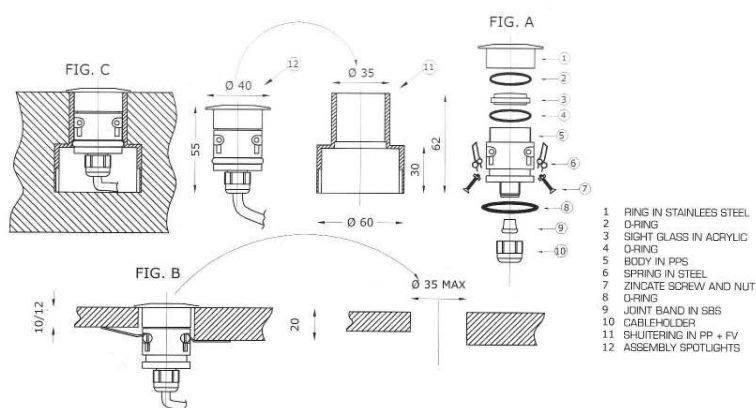


An exceptionally versatile new fitting from our ARES range, this discreet unit offers superb performance by incorporating a single 1W Luxeon® high power L.E.D. Fitted with clear lens, the unit is also supplied complete with three coloured acrylic lenses which are easily changed to create a stunning effect. For buried applications, an installation tube is supplied as standard, with “O” ring seals securing the body to the tube for ease of installation. For recessed applications the standard spring clips supplied are easily fitted to the luminaire body in seconds and enable the unit to be installed within mounting surface thickness of between 10mm & 20mm. Each fitting is supplied pre-wired for use with a range of remote power supplies to operate a number of these units to suit each application. Bezel manufactured from 316 stainless steel, lightly brushed finish as standard.

Cat. No.

928600 Luminaire c/w installation tube, spring clips & coloured lenses

18900 Remote IP65 power supply (state power output required)



We reserve the right to amend specifications without notice.

Commercial Lighting Systems Ltd

Units 16/17 Chandlers Way, Swanwick, Southampton SO31 1FQ

Tel: +44 (0)1489 581002 Fax: +44 (0)1489 576262

Email: sales@commercial-lighting.co.uk

Website: www.commercial-lighting.co.uk